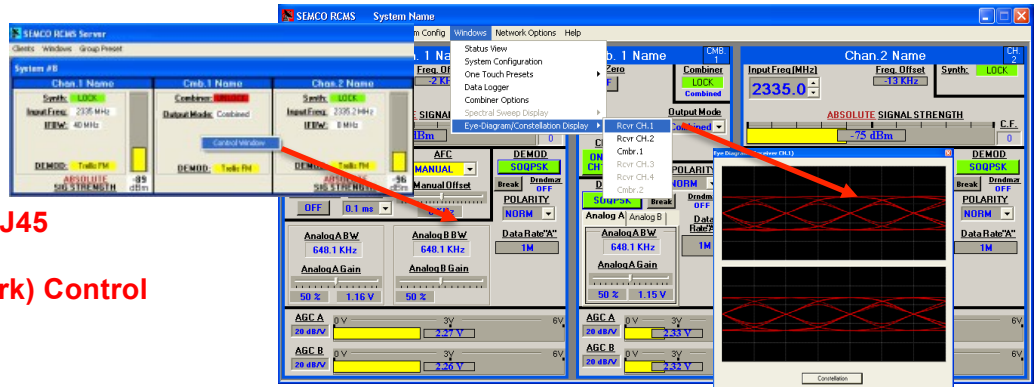




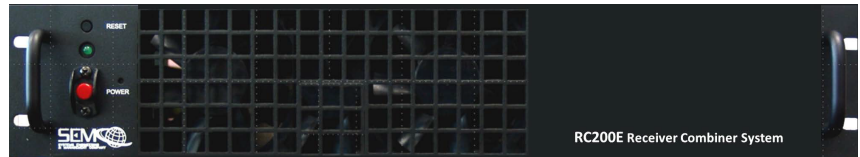
FULLY IA COMPLIANT TELEMETRY RECEIVERS (NO EMBEDDED PROCESSOR OR OS)

FEATURES

- ✓ No Windows or Linux Operating System
- ✓ Ethernet Control via RJ45
- ✓ RCMS Remote (Network) Control
- ✓ Laptop Local Control
- ✓ 6U, 4U, 3U, 2U and 1U Rack-Mount Receivers
- ✓ Same Features and Performance As Current and Legacy SEMCO Receivers



Proven SEMCO RCMS Network Software



All SEMCO Legacy Receivers Upgradeable to "Ethernet Only" (2U shown here)

DESCRIPTION - SEMCO's "E" Series Telemetry Receiver product line consists of 1U, 2U, 3U, 4U and 6U rack-mount configurations designed for telemetry data reception and antenna tracking applications. All receivers are operated using SEMCO's proven RCMS Remote (Network) software, with local control via laptop or local computer when required. *These "Ethernet only" receivers completely mitigate IA compliance issues, as they do not require an embedded processor and Operating System. Importantly, all existing SEMCO legacy receivers can be easily upgraded to this configuration.* Features and Performance specifications are the same as all current SEMCO receivers, including Data Quality Metrics (DQM), Low Density Parity Check (LDPC) and Space Time Coding (STC). Additional features include Adaptive Equalization (AE) and TM over IP, as well as expanded modulation formats and Forward Error Correction (FEC)

STANDARD CONFIGURATION

- Multi-Channel Receivers (Dual or Quad Channels)
- Dual Channel Receiver Combiner (Pre-d & Post-d)
- 1415-1585, 1650-1850 or 2185-2485 MHz Tuning
- PCM/FM and NTSC Video Demodulation
- Embedded Bit Syncs with De-randomizer (all 3/6 CHs)
- Eye Pattern and Constellation Displays
- 4 User-Configurable Analog/Digital Outputs per CH
- AM and scalable AGC Antenna Tracking Outputs
- Front Panel Removable Solid State Drive
- GUI Selectable 70 MHz Playback
- RCMS Network Software (Ethernet Remote Control)

OPTIONS

- Frame Synchronizer, BERT & Internal RF BIT Source
- 70 MHz, 200-1150 MHz or 4400-5250 MHz Tuning
- Multi-Channel Spectral Sweep
- Pre-d Record and Playback (75 kHz to 15 MHz)

OPTIONS (continued)

- AFC (CFO) Loop Stress Outputs
- 1415-1585, 1650-1850 and 2185-2485 MHz Tuning
- PM, BPSK & A/U/S/O/QPSK Demodulation
- IRIG 106-13 Trellis FM, SOQPSK-TG & Multi-h CPM
- PM/PSK (SGLS) and FM/FM S/C Demodulation
- Coherent AM Demodulation
- Adaptive Equalization
- Data Quality Metrics (DQM) for BSS
- CCSDS Spread Spectrum
- TM over I/P
- Low Density Parity Check (LDPC) Feature
- Space Time Coding (STC) Feature
- Reed Solomon & K7 Viterbi Decoder (k=7 rate ½)
- Programmable 70 MHz Down Converted Outputs
- Selective Turbo Coding
- Space Link Extension (SLE)

RANGE PROVEN...RANGE READY

Systems Engineering & Management Co.
1430 Vantage Court
Vista, CA 92081-8596



Technology and Innovation For A Safer World

(800) 995-0636, ext. 1125
(760) 727-5200 (fax)
www.semco.com

January 2016