



Digital Video/Audio Transmitter

Series VTD50



Features

- L, S, or C Bands
- Agile Frequency
- Audio & Data Sub-Carriers
- 100 Milliwatts
- 1.25 to 8 MHz Selectable Bandwidths



Description

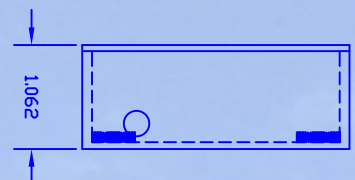
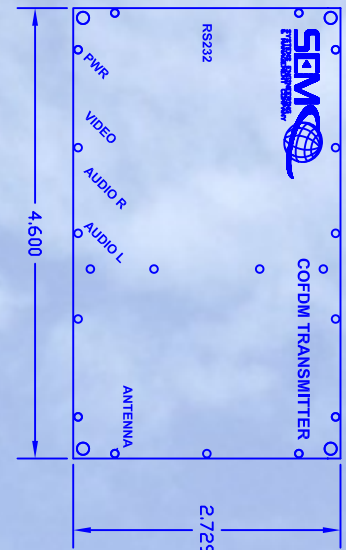
The VTD 50 series of broadcast quality, digital (COFDM) video transmitters are designed to transmit black and white or color video signals in the frequency bands covering 1755-1850, 2200-2400, 2400-2500, or 4400-5000 MHz. The VTD 50 design includes both audio and telemetry sub-carriers.

COFDM is a particularly useful modulation scheme in those environments where analog FM transmission has serious shortcomings, for example non-line-of-sight (NLOS) and strong multipath.

The video bandwidth can be varied from 1.25 MHz up to a broadcast quality level of 8 MHz. MPEG2 image compression is standard; MPEG4 is optional. Standard encryption is ABS. AES encryption is available up to 256 bit, also as an option.

Rugged construction, minimum size and light weight make these transmitters ideally suited for applications where operation in harsh conditions is required.

The Series VTD 50 video transmitter comes with SEMCO's 1 year warranty on parts and labor.



Systems Engineering &
Management Company
1430 Vantage Court
Vista, CA 92081

For Further Information Call
(800) 995-0636, Ext.1126
FAX (760) 727-5200
Www.semco.com

Technology & Innovation For A Safer World



Specifications

Series VTD 50 *Digital* Video/Audio Transmitter

RF

Frequency Range	L, S, or C Bands
Frequency Selection	Multi-channel
Output Power	Programmable to 100 milli-watts
Modulation	COFDM

VIDEO SECTION

Line Standard	NTSC (PAL optional)
Bandwidths	8, 7, 6, 2.5 MHz (1.25 MHz optional)
Coding	MPEG2 (MPEG4 optional)
Frame Rate	1/1, 1/2, 1/4, 1/8 (selectable)

AUDIO SECTION

Input	Line or Mic Level
Sample Rate	32 KHz, 16 KHz, 8KHz (selectable)

DATA SECTION

Rate	1K to 115K Baud (Rs232)
------	-------------------------

ENVIRONMENTAL SPECIFICATIONS

Temperature	-20 to +70 degrees C
-------------	----------------------

POWER REQUIREMENTS

Input Voltage	6 -16 VDC (reverse polarity protected)
Power Consumption	4.8 to 6 Watts
Input Current	500 mA (maximum at 12 VDC)

CONNECTORS

Video Input	RCA female
Audio/Telemetry Input(s)	RCA female
RF Output	SMA female
RS232 Input	9-pin "D" female
Power	Hirose

MECHANICAL

Size	4.60 x 2.73 x 1.06 inches
Weight	7.2 ounces

Systems Engineering &
Management Company
1430 Vantage Court
Vista, CA 92081

For Further Information Call
(800) 995-0636, Ext.1126
FAX (760) 727-5200
www.semco.com

Technology & Innovation For A Safer World